

Play & Leisure *The Power of Play*

Installation details for **Matterhorn Mountain multiplay (MO11)**

<u>Component list</u>	<u>Quantity</u>
1.0m H sections	2
0.8m H sections	2
0.5m H sections	2
0.3m H sections	1
0.0m H sections	1
Square platforms	3
1.0m Wide Slide, holder & foot	1
Access Steps	1
Steering Wheel Panel	1
Abacus Panel	1
Chimes Panel	1
Ball Maze Panel	1
Firepole	1
Safety Barrier	1
Monkey Walk	1
Hoop Trapeze	1
Guard Rails (Large)	2
Guard Rails (Small)	4
Large Ramp	1
Small Ramps	2

- 1) Construct base as per layout drawing P/MO11/1 ensuring the correct levels for safety surfacing.
- 2) Excavate 400mm x 400mm holes for H sections as in drawing P/MO11/2 to a depth of 450mm from finished surfacing level. (All H sections have finished ground level marks)
- 3) Assemble the numbered H sections together in pairs (i.e.1 to 2, 3 to 4 & 5 to 6) with a platform using M10 x 30 resistorx & nylon washers, and place in to the corresponding excavated holes (see P/MO11/2 for corresponding hole/H numbers)
Tap holes with a 10mm tap and make sure bolts are only hand tight at this stage
- 4) Connect together using the stated links. i.e. Monkey Walk, Hoop Trapeze Ramp & Small Ramps.
- 5) When all H sections and links have been fitted, level in all directions and check distances from edge of surfacing area.
- 6) Mark out for access points as drawing P/MO11/3 and excavate to a depth of 450 as before (550mm for the slide foot)
- 7) Assemble all other items of equipment as drawing P/MO11/4 using M10 x 30 resistorx & nylon washers.
- 8) Note: M10 x 25 resistorx are used to connect the slide to the foot.
- 9) Connect the panels using M10 x 50 resistorx, steel washers x 2, nyloc & plastic cap sets.
- 10) Once all equipment is fitted check levels again, tighten all bolts & concrete in to the ground.



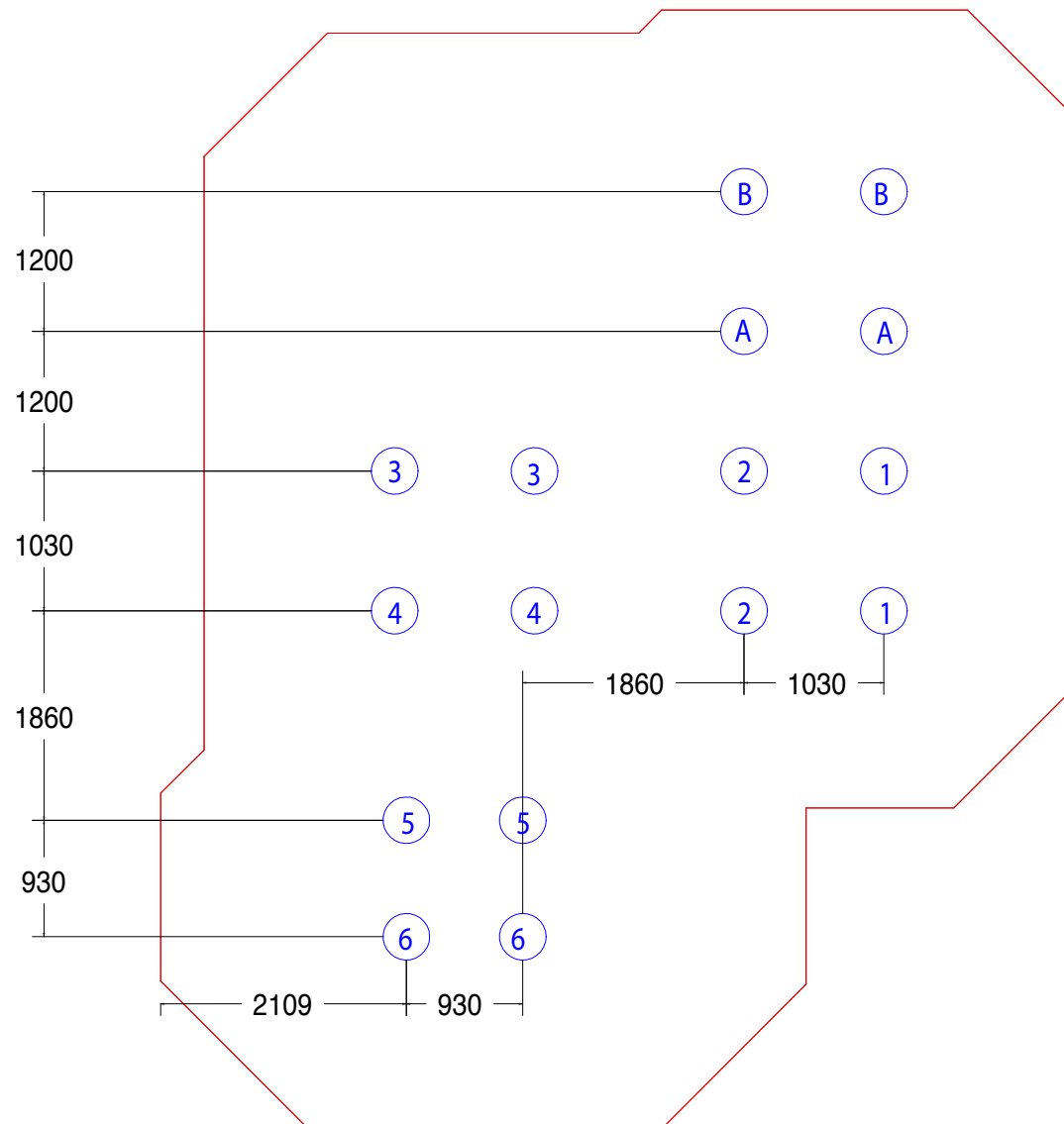
FM 34774

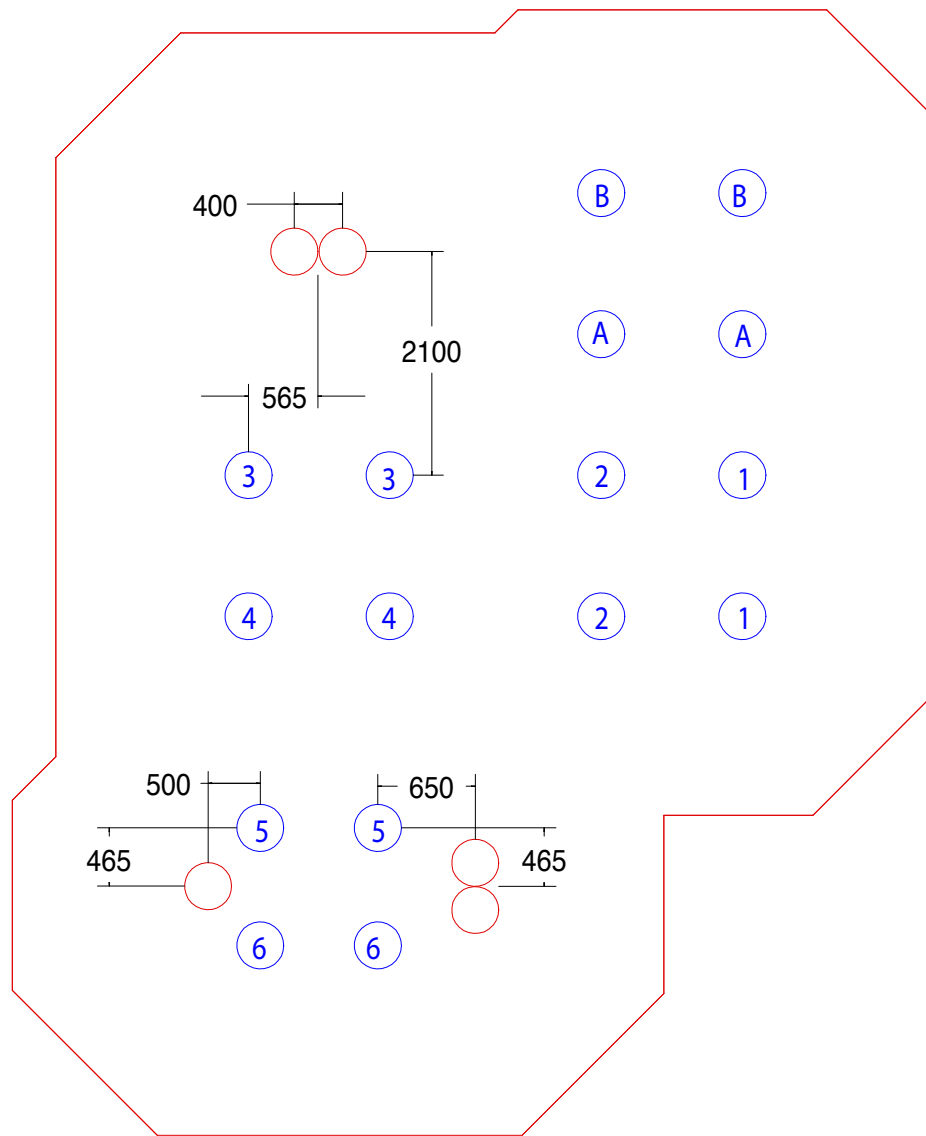


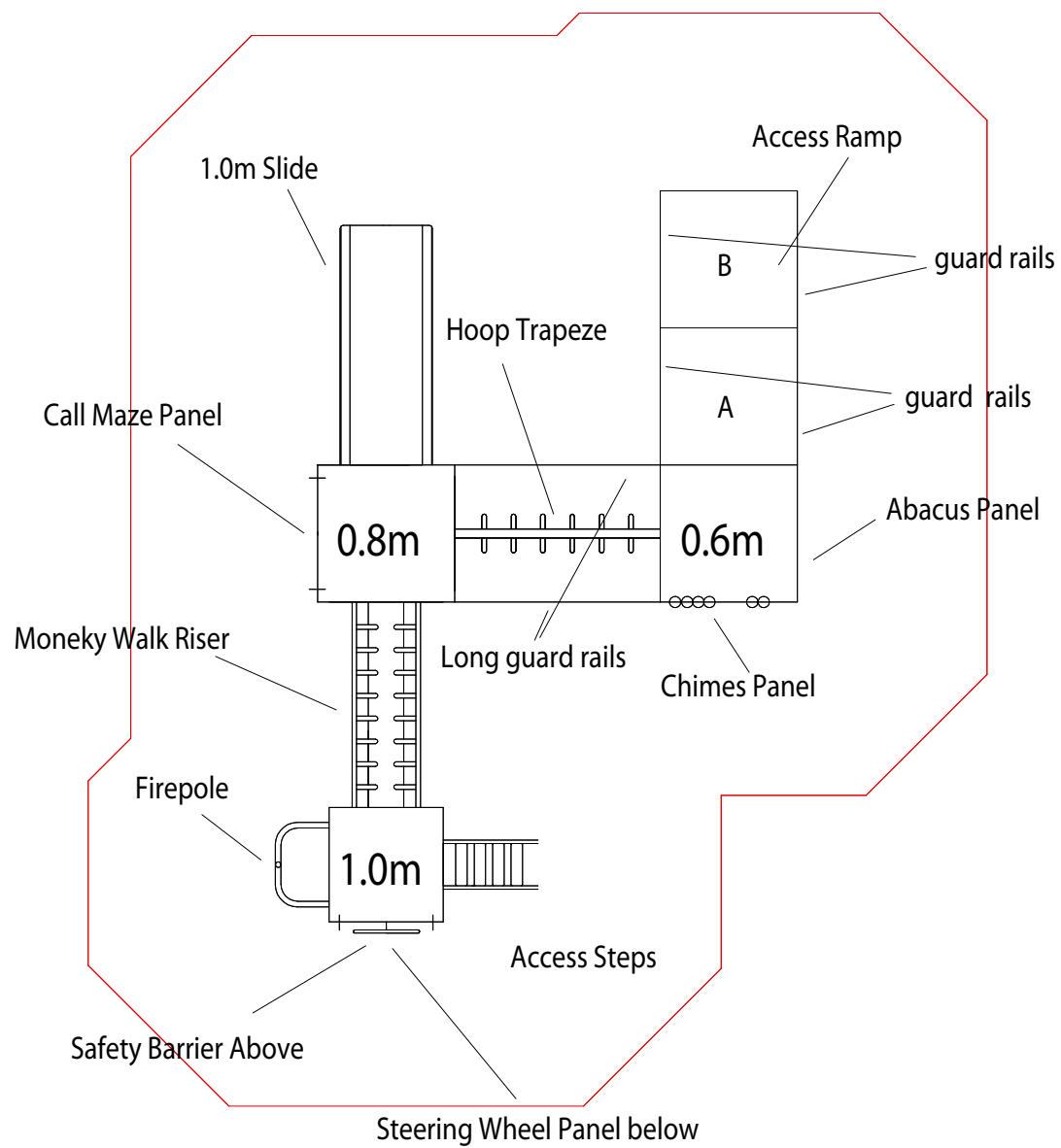
DRG.	P/MO11/01
No.	

N/A

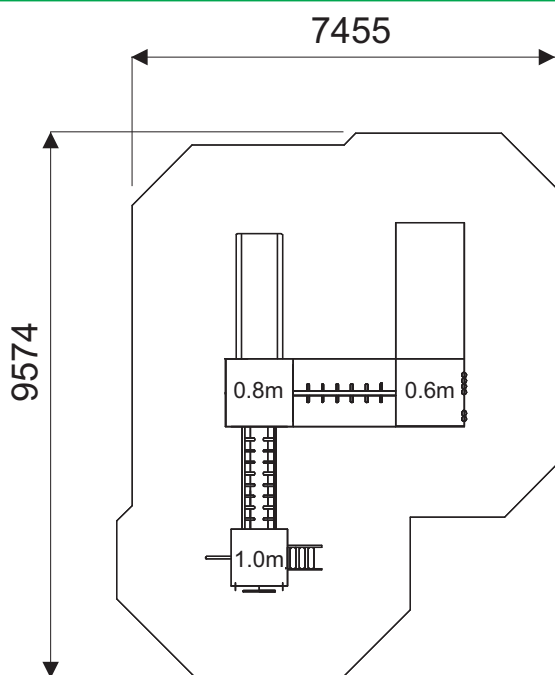
DATE 17/06/2014







Mountain



Technical AT-A-GLANCE

Product Code
MO11
Equipment Size
6400L x 4529W x 2800H
Minimum Space
9574 x 7455
Free Height of Fall
1000
Safety Surface Area
61m ²

All steel equipment manufactured by Play & Leisure is shotblasted to SA 2.5 before a 60-micron thick epoxy based zinc phosphate primer is applied and finally a 70 micron thick coating of polyester powder.

All Play & Leisure Ltd's equipment complies to BS EN 1176 parts 1-7, and BS EN 15312. Equipment is guaranteed for 25 years against structural failure.

Matterhorn Multiplay Unit